

# MORNING EQUITY REPORT

## TECHNICAL OUTLOOK

- Benchmark index traded range bound before closing with 0.13% gain at 24642 level yesterday. Banking index underperformed the benchmark index as it closed with 0.35% cut at 53391 level.
- India VIX closed with 3.70% cut at 13.26 level.
- Among Sectors, NIFTYFMCG outperformed the benchmark index as it closed with 0.42% gain while PSUBANK underperformed as it closed with 0.89% cut.
- Broader market outperformed the benchmark index as both MIDCAP and SMALLCAP index closed with 0.27% and 0.38% gains respectively.
- Advance/Decline ratio was in favour of advances and cash turnover was lower than the 5-day average. FII were net sellers while DII were net buyers in the cash segment.
- European markets (DAX) closed higher while US markets (DJIA) closed lower yesterday. Asian Markets are trading higher today.

## Intraday Market Outlook

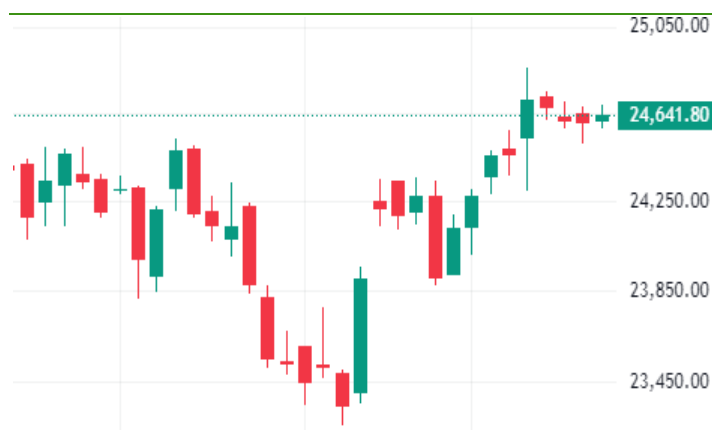
- Benchmark index is likely to trade volatile on weekly expiry today. Index has support at 24500 - 24450 level and resistance at 24800 - 24850 level.
- Banking index is likely to trade in line with the benchmark index with support at 52900 - 52700 level and resistance at 53900 - 54100 level.
- KPITTECH closed with a positive candlestick pattern and it is likely to trade with a positive bias today.

## PIVOT TABLE

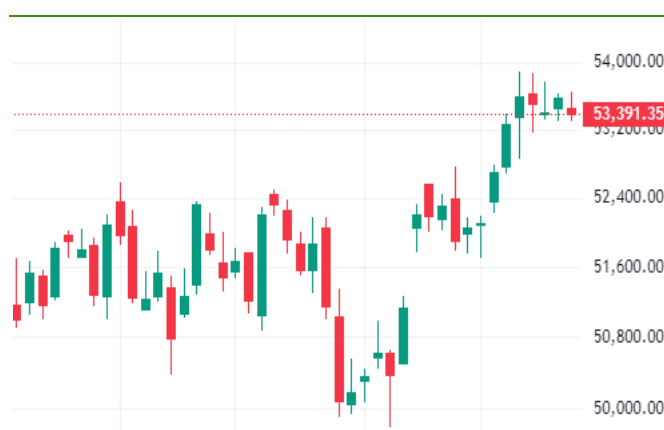
INDEX	S2	S1	CLOSE	R1	R2
NIFTY	24450	24500	24,642	24800	24850
BANK NIFTY	52700	52900	53,391	53900	54100

Source: MNCL RESEARCH

## NIFTY (Daily) Chart



## BANK NIFTY (Daily) Chart



## Indices

INDEX	Close	% Change
CNX NIFTY	24,642	0.13%
BANK NIFTY	53,391	-0.35%
FINNIFTY	24,803	0.00%
NIFTYNEXT50	73,292	0.27%
MIDCAP SELECT	13,134	0.37%
SENSEX	81,526	0.02%
VIX	13.27	-3.70%

Source: NSE

## Sector Gainers/Losers

INDEX	Close	% Change
NIFTY AUTO	23,852	0.36%
NIFTY FMCG	56,767	0.42%
NIFTY IT	45,350	0.33%
NIFTY METAL	9,484	0.09%
NIFTYPHARM	22,303	0.05%
NIFTY REALTY	1,094	0.18%
NIFTY PSE	10,363	0.11%
NIFTYPVTBA	25,856	-0.25%
NIFTYPSUBA	7,089	-0.89%
NIFTYMIDCA	59,293	0.27%
NIFTYSMLC	19,657	0.38%

Source: NSE

## FII / DII ACTIVITY

INDEX	Rs IN CR
FII	-1,012.2
DII	2,007.9

Source: NSE

## Market Breath (Nifty 50)

Advance	26
Decline	23
Unchanged	1

Source: NSE

## Turnover (Cr)

Daily cash Turnover	97,653
5 Days Average	1,10,926

Source: NSE

### STOCKS OF THE DAY

Stock	Closing Price	% Change	Bias	S2	S1	PIVOT	R1	R2
KPITTECH	1,548.9	0.7%	Positive	1515.1	1,532.0	1,543.9	1,560.8	1,572.8

Source: NSE, MNCL Research

Note: Standard pivot and Support/Resistance are calculated based on a mathematical formula. If the stock trades above/below the pivot point (unless specified otherwise), then traders can initiate trade in that direction. We have highlighted our bias in the stock based on the Technical as well derivative data analysis.

### CHART OF THE DAY

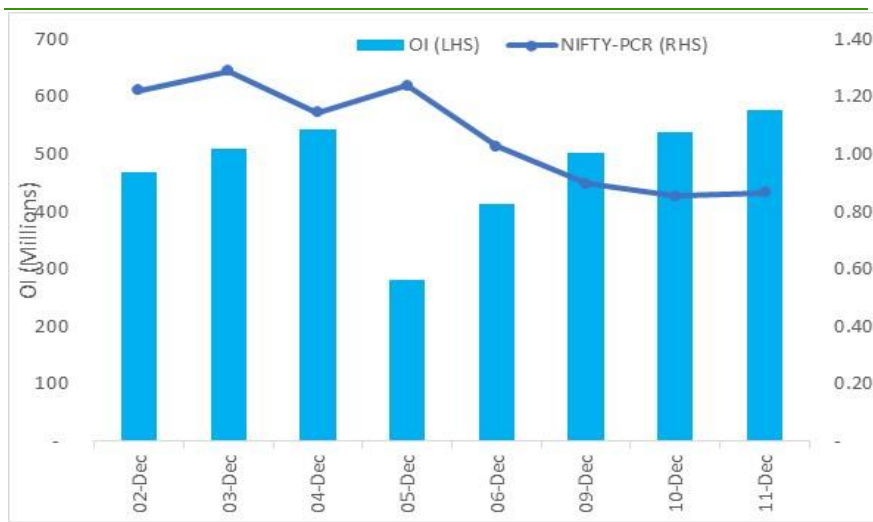
#### KPITTECH



### DERIVATIVE SUMMARY

- For weekly (12 Dec), max OI addition was seen at 24650 call and 23800 put. Max OI is at 25000 call and 24000 put. For Monthly expiry (26 Dec), max OI addition was seen at 24700 call and 14000 put. Max OI is at 26000 call and 24000 put.
- Cumulative Nifty PCR stands at 0.87 (11 Dec24) Vs 0.86 (10 Dec24)
- Overall FII derivatives data is negative for Wednesday (11 Dec24)
- In Index futures, there was net unwinding on the long side resulting in long exposure went down at 43.50% (11 Dec24) Vs 44.81% (10 Dec24). In Index options, there was net addition in call options - long side and net addition in put options - short side.

#### Nifty PCR OI



Source: NSE, MNCL Research

#### Index Derivative data (26 Dec Expiry)

SYMBOL	Nifty	Banknifty
Closing Price	24642	53391
Max OI Call	26000	54000
Max OI Put	24000	52000
Max change in OI Call	24700	53500
Max change in OI Put	14000	53500
PCR (Cumulative)	0.87	0.95

Source: NSE, MNCL Research

**EQUITY RESEARCH TEAM**

Name	Designation	Email	Landline No.
Amit Jain	Senior Vice President (Head - Retail Research)	<a href="mailto:amit.jain1@mnclgroup.com">amit.jain1@mnclgroup.com</a>	011-40851320
Arpan Shah	Senior Research Analyst	<a href="mailto:arpan.shah@mnclgroup.com">arpan.shah@mnclgroup.com</a>	079-26666504
Ketan Kaushik	Derivative Analyst	<a href="mailto:ketan.kaushik@mnclgroup.com">ketan.kaushik@mnclgroup.com</a>	0141-4007235

For Disclaimer & Risk factors please [click here](#)

Monarch Network Capital Ltd. ([www.mnclgroup.com](http://www.mnclgroup.com))

Office: - 9th Floor, Atlanta Centre, Sonawala Lane, Opp. UdyogBhavan, Goregaon (E), Mumbai 400 063. Tel No.: 022 30641600